

# DOG WASTE AND SURFACE WATER QUALITY

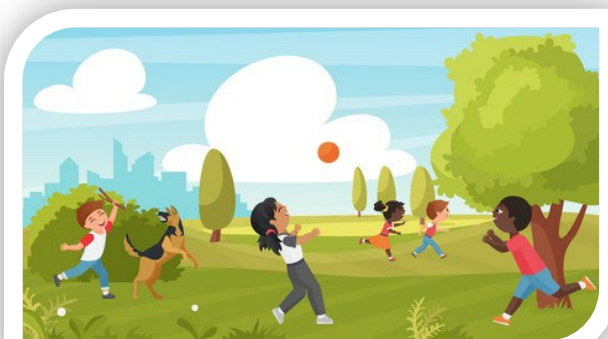
## WHY AREN'T DOGS ALLOWED ON DCR WATERSHED LANDS?

DCR's Watershed lands serve as **protection** for a **sensitive drinking water** supply for **3 million Massachusetts residents**, the Quabbin and Wachusett Reservoirs and the emergency supply Sudbury Reservoir.

Bacteria and other parasites, such as **Giardia** and **Cryptosporidium** found in pet waste can survive for long periods when left on the ground. During the next rainfall, these can get washed into the drinking water supply, compromising water quality which is regulated by state and federal laws.

**Every dog** produces about **¾ lbs. of solid waste** and **7.8 billion** fecal coliform bacteria each day.

When pet waste is left on the ground, rain or snowmelt carries the bacteria into our surface water supplies, either directly or through the storm drain system.



## WHAT'S THE PROBLEM WITH PET WASTE?

Pet waste left in our yards and communities can have many **adverse effects on the environment**:

- It is full of **harmful bacteria** and **excess nutrients**.
- It is a **neighborhood nuisance**
- it can **make people sick**, especially **children** who are more likely to come into contact with it while playing.
- Pet waste left on lawns can also **kill or damage grass** and other plants.

When pet waste is washed into lakes or streams, the waste decays, uses up oxygen and sometimes releases ammonia. **This can kill fish.**

It also contains nutrients that encourage weed and algae growth.

Water with too many nutrients becomes cloudy and green...**imagine this in your backyard pond or stream!**

**Managing pet waste properly is something easy that everyone can do to make a difference in the quality of our surface waters**

## HOW YOU CAN HELP...

- **BRING IT**- Always bring a plastic bag when you walk your dog.
- **BAG IT**-Use the bag as a glove to pick up the pet waste. Scoop up the waste and turn the bag inside out around the waste.
- **DISPOSE IT**- Properly dispose the waste by placing it in a trash can or flushing it unbagged down the toilet. **NEVER THROW WASTE DOWN A STORM DRAIN!**
- **WASH YOUR HANDS**
- **Pick up** after your pet in your yard.
- Only bring your dog where dogs are allowed.

Please adhere to posted signage around the Sudbury and Foss Reservoirs and while on the Boroughs Loop Trail.

